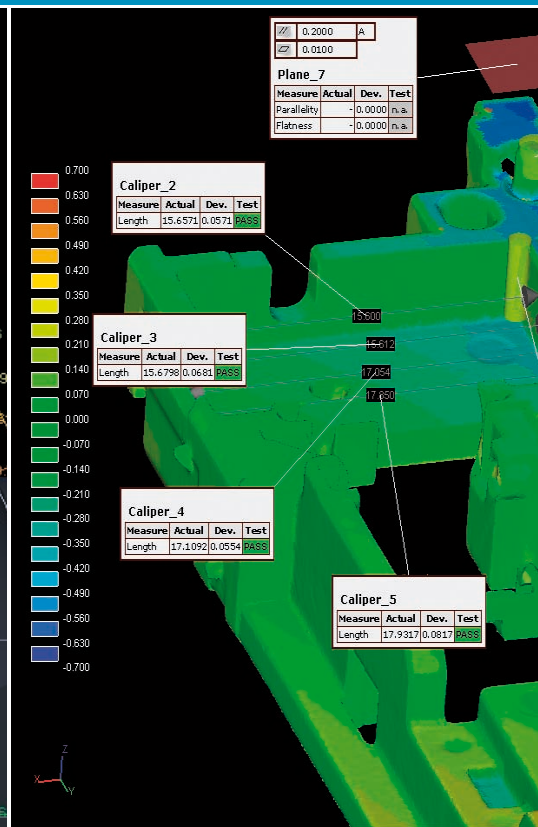
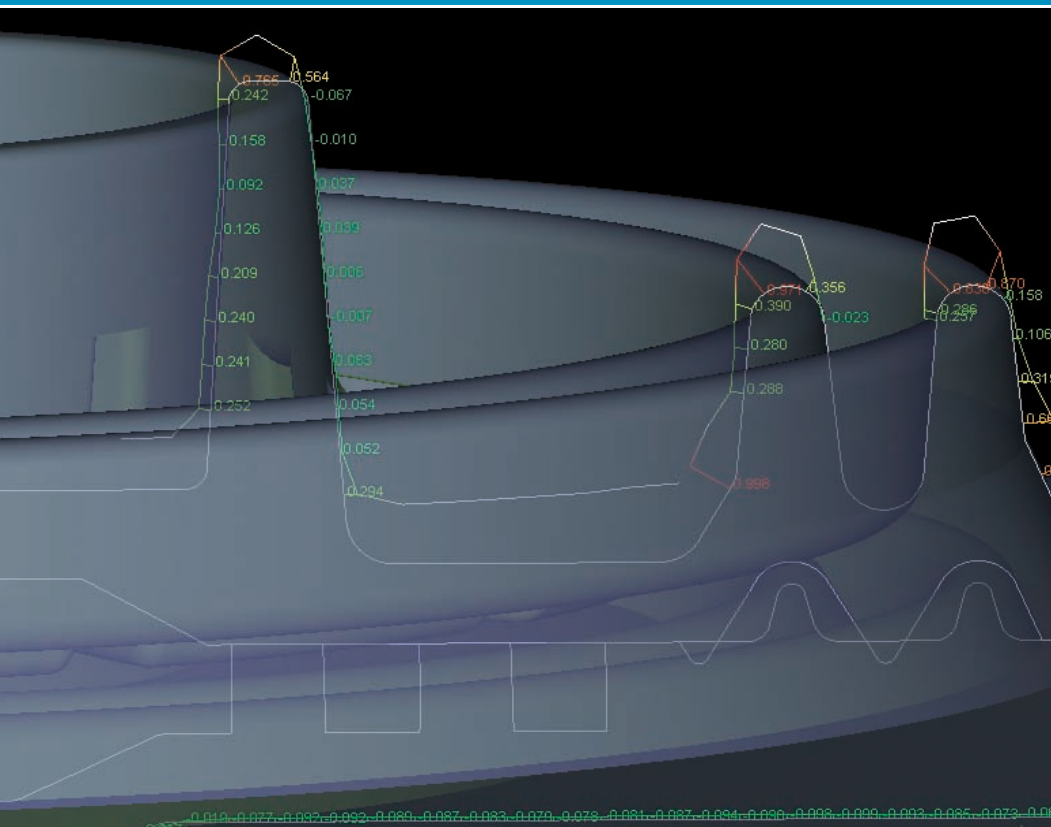
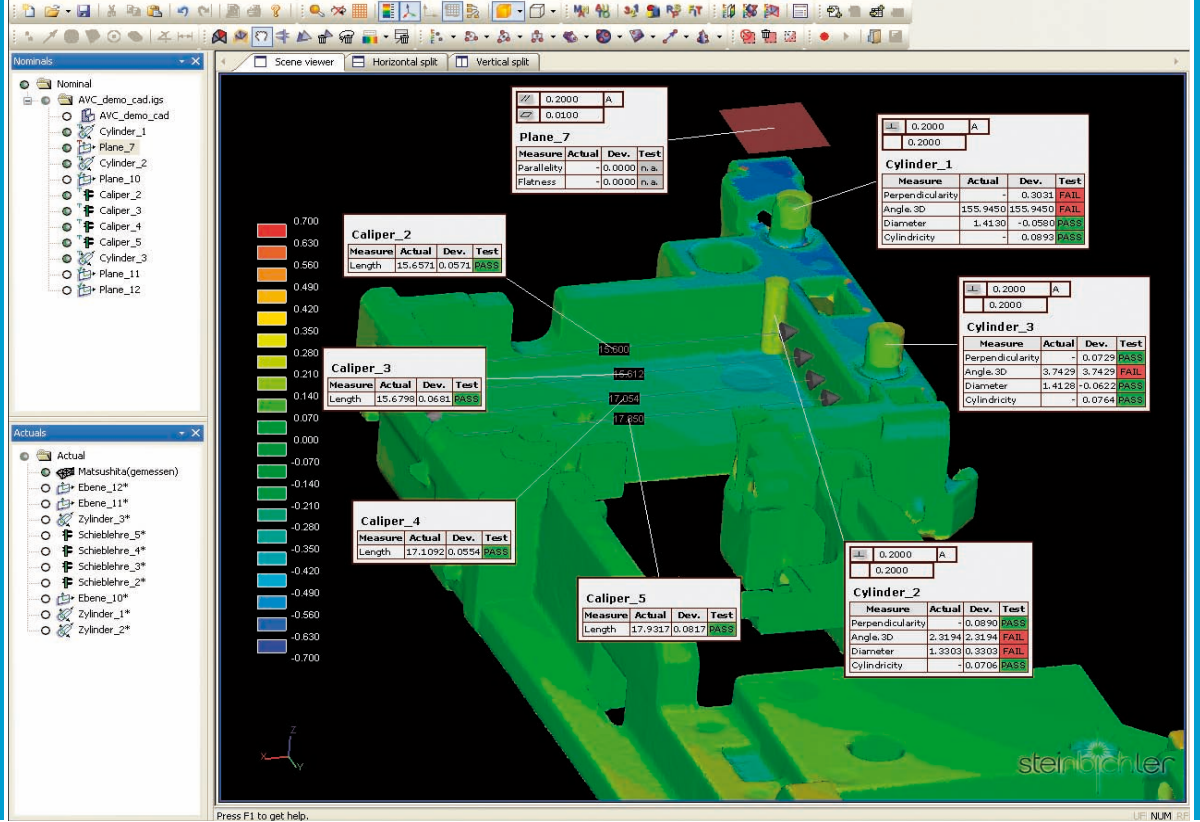


INSPECT_{plus}

INSPECTION SOFTWARE



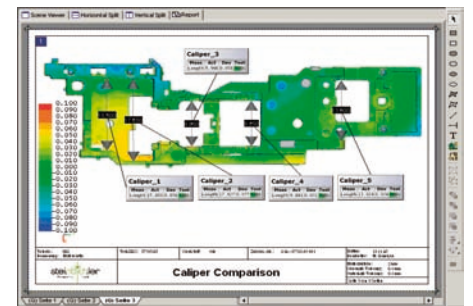
steinbichler



INSPECT_{plus} INSPECTION SOFTWARE

With the INSPECT_{plus} inspection software, Steinbichler Optotechnik has developed an easy-to-use inspection software which offers the user a wide range of functions for the dimensional evaluation of data sets. The data comparison (CAD data, measurement data) can be performed either online or any time later.

The measurement results give the user valuable basic information for a wide application range, e.g. for possible corrections of tool settings, or for the localization of wear and tear areas on a tool which may require reconditioning. The comprehensive comparison methods (e.g., surface comparison with user-selectable false-color plots, comparison of sections and borderlines with needle diagram) provide a highly efficient tool for quality control which pairs high performance with ease of use.



For the alignment of the measurement data, the user can choose a suitable method from a comprehensive state-of-the-art functionality range. Among the variety of available alignment methods, the additional function for fully automatic alignment enables the user to save valuable time in inspections involving recurring measurements or automated processes, thus providing exceptional ease of use.

Any inspection process can be automated using user-defined Visual Basic macros. Including protocol generation and comprehensive editing functions for the documentation of the measurement results, INSPECT_{plus} is a compact, versatile and easy-to-use inspection software package suitable for a wide range of applications.

INSPECT_{plus} FUNCTION OVERVIEW

GENERAL FUNCTIONS:

- INSPECT_{plus} application in 64bit technology including direct interfaces for automatic data exchange with COMET_{plus} and T-SCAN_{plus}
- Easy to use, graphical user interface
- Import of common CAD data formats: IGES, VDA-FS, Catia V4 / V5, SAT, STEP, Pro/E (optional import interfaces)
- Import of any Steinbichler data formats: CID, CDB, TSC
- Import of pointclouds and polygons: OBC (AICON), ASC, PTS, TXT, STL, AC
- Export of pointclouds and polygons: ACS, PTS, TXT, STL, SBT, SBP, AC
- Data export to statistics programs: qs-STAT, CSV

FUNCTIONS FOR DATA ALIGNMENT:

- Interactive data transformation with possible recording of single translation or rotation axis
- Fully automatic or manual pre-alignment using selected single points
- Best fit alignment with simultaneous automatic pre-alignment of the data sets and/or alignment based on selected elements
- Classic 3-2-1 alignment
- RPS alignment and alignment to geometry elements

EVALUATION FUNCTIONS:

- Calculation of the deviation for surface data, planar sections, borderlines, fold points
- Display of deviation via freely scalable color display
- Display of needle diagrams for comparison of border lines and intersections
- Calculation of distance and angle values, display of deviation relative to nominal data
- Inspection of comparison and RPS points, geometry features (holes and slots, vectors, planes, spheres, cylinders, cones) and evaluation of shape and position tolerances (GD&T)
- Visualization of the results by freely definable flyers (GD&T information, object features, deviations and spatial position)

DATA EDITING FUNCTIONS:

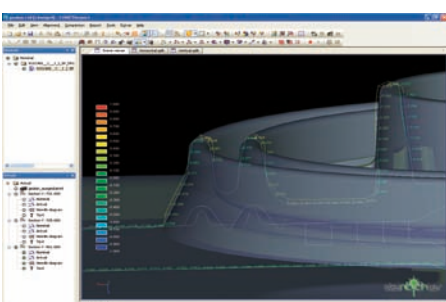
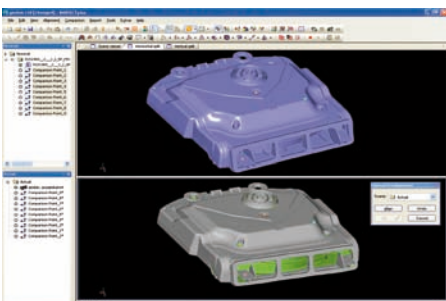
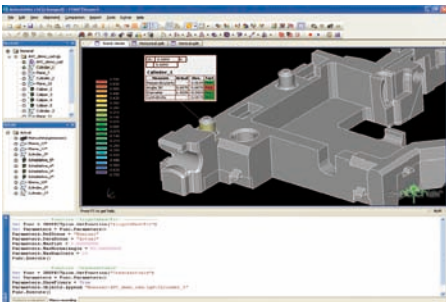
- Automatic orientation of surface patches in CAD
- Interactive and automatic trimming
- Mesh decimation
- Data transformation by translation, rotation and scaling
- Data mirroring
- Orientation flipping of single areas in CAD
- Determination of point direction from nominal data
- Undo/redo function

AUTOMATION FUNCTIONS:

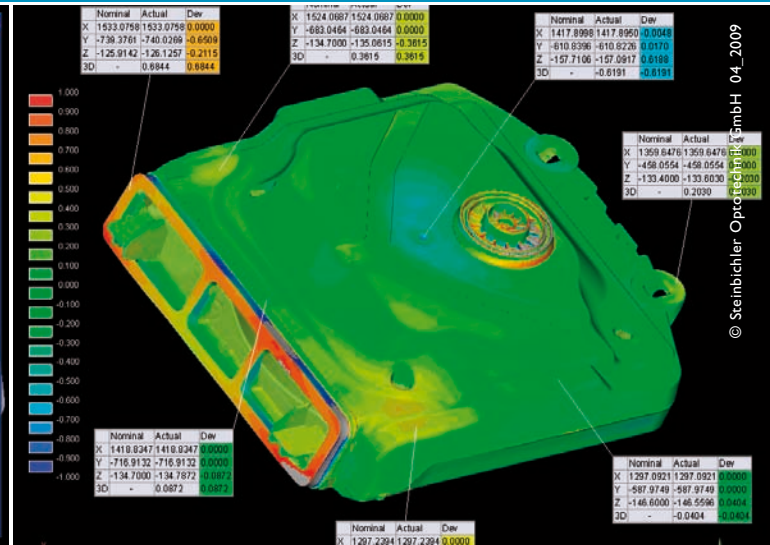
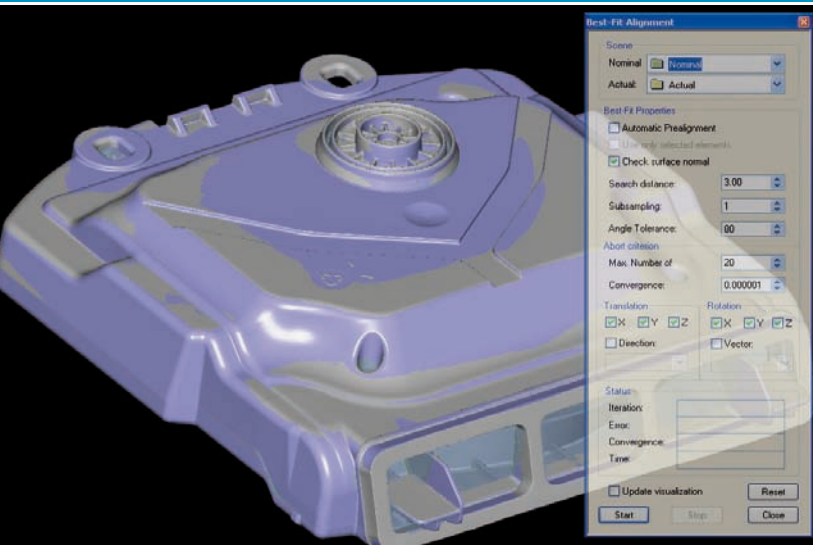
- Automatic evaluation and report generation via macro control (macro recorder)
- Online inspection by direct import of 3D pointclouds and comparison to reference data

REPORT GENERATION:

- Easy and intuitive report generation with extensive editing functions and export in pdf format



Steinbichler Optotechnik GmbH • Georg-Wiesböck-Ring 12 • 83115 Neubeuern - Germany
 fon: +49-8035-8704-0 • fax: +49-8035-1010 • sales@steinbichler.de • www.steinbichler.de



© Steinbichler Optotechnik GmbH 04_2009

